




UNIVERSITY PERSPECTIVES, CHALLENGES AND OPPORTUNITIES.

Professor Elizabeth Treasure,
Deputy Vice Chancellor, Cardiff University



Objectives

- Overview of the role of a university
- CU's aims and objectives to 2017
- Opportunities using Health Determinants Model
- How the student population is changing
- Challenges using Health Determinants Model
- My view

Purpose

- The University exists to create and share knowledge and to educate for the benefit of Cardiff, Wales, and the world.

Scale of operation

- £420M turnover
- 28,000 students
 - 3,800 from outside EU
- 6,000 staff

Education

- Educate our students to the very highest standards
- Support them through the transition to independent learning
- Students actively participate in their learning experience and benefit from the research led environment
- Recruit the brightest students from all strata of society
- Graduates, who are well-rounded, flexible, mobile and highly employable individuals, many with work based and/or international experience.

Research

- **Leading University catalysis experts have received a £3M funding boost as part of a major new hub designed to support economic growth, reduce CO₂ emissions, produce cleaner water and generate more sustainable energy.**

Research

- **Research conducted by Cardiff Law School shows that the efficiency of the system dealing with international child abduction to England and Wales may be under threat.**

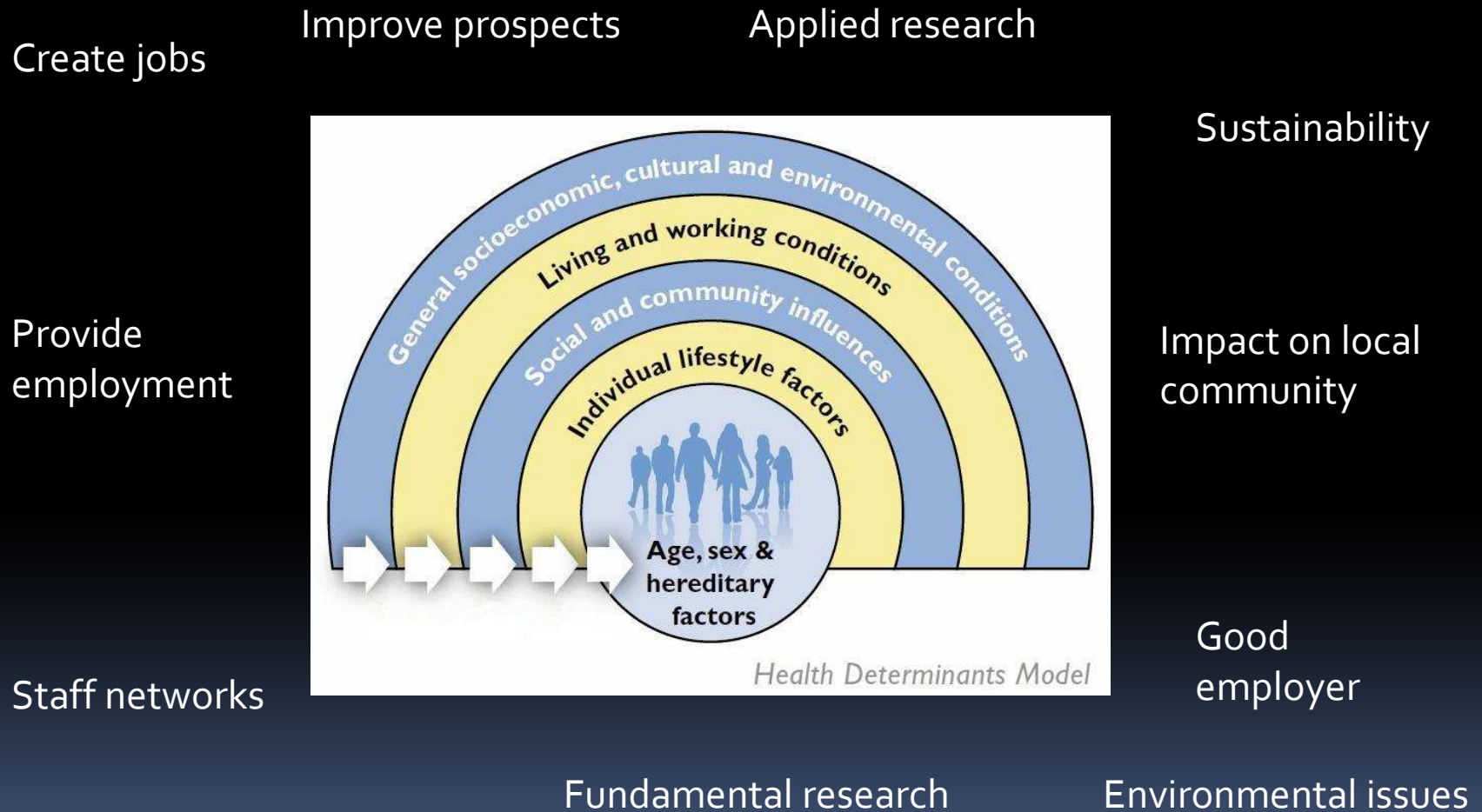
Engagement

- Spin out companies
- Knowledge transfer to Welsh companies
 - Focus on social inclusion
 - Focus on health
- Projects for the local communities

International

- Two close-knit relationships with international institutions
- 17% of our students to study / volunteer abroad by 2017
- Increase proportion of international students

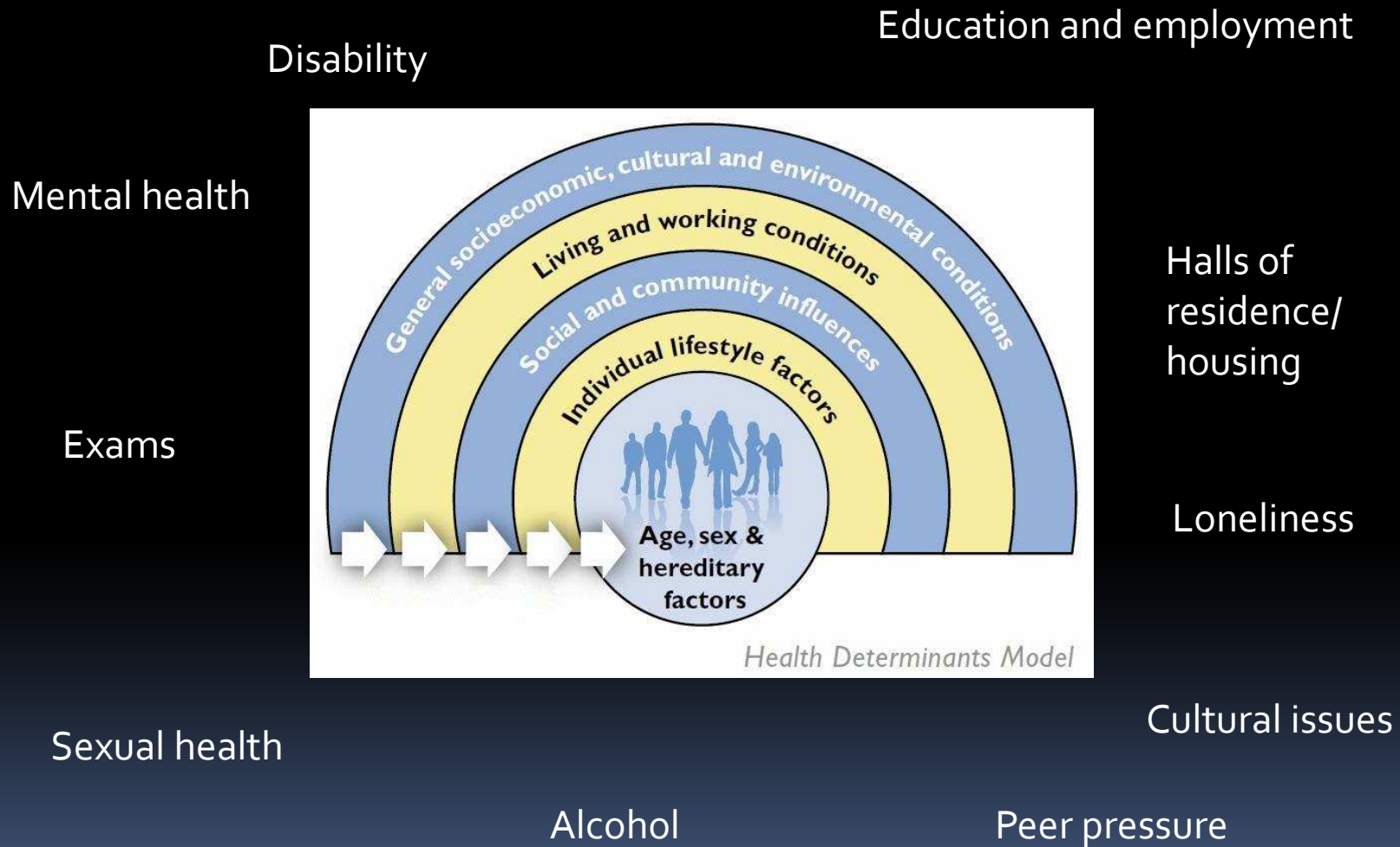
Opportunities



Changing student population

- Increase in students with a disability
- Increase in students with mental health issues

Challenges



Mental health issues

- **More mental health support needed for students in higher education**
 - Royal College of Psychiatrists 2011
- All HEIs to have a formal mental health policy
 - training in the recognition of mental disorder and suicide
- Particular attention to the needs of vulnerable groups of students
 - e.g international students and those with a history of mental disorder.
- The 'Healthy Universities' network should be adopted
- Higher education institutions and the NHS should work together more closely
- The departments of health in the four UK countries establish special funding provision for dedicated student health services provided by GPs.



Conclusion